

VETERAN-OWNED | BON VIVANT®



**Anthony B. Miles**

US Navy Trident Nuclear  
Submarine Force Veteran

# VETERAN CANTEEN SERVICE SINGLE PAIR DROP SHIP PROGRAM

*Get high-performance vision eyewear—one pair at a time—  
delivered directly to you. No bulk orders. No hassle.*

# VETERAN CANTEEN SERVICE SINGLE PAIR DROP SHIP PROGRAM

## WHAT THIS PROGRAM IS

An easy-to-use program that gives you direct access to non-prescription eyewear through fast, reliable delivery.

## HOW IT WORKS

Choose your eyewear → Place your order → Get it delivered

## CHOOSE YOUR EYEWEAR

Available options include:

- Workforce Safety
- Recovery Comfort
- Screen Protection
- Field Protection
- Vision Stability

## WHO IT'S FOR

- Veterans
- VA healthcare personnel
- VA workforce and support staff

## WHY IT EXISTS

To make getting high-performance eyewear simple, fast, and accessible—whenever you need it.

**BON VIVANT®**

Service-Disabled Veteran-Owned (SDVOSB)



# GENERAL WORKFORCE ANSI COMPLIANCE EYEWEAR

A continuous ANSI-certified eye-wear system designed for occupational protection.



**WORKFORCE  
SAFETY**



**One Pair. All Day.**



**NO PPE COMPLIANCE**

Unprotected or inconsistent eye protection in active job environments increases injury risk, compliance violations, and operational downtime across the workforce.



**HIGH RISK EXPOSURE**



**IMPACT  
PROTECTION**



**FOG-FREE  
CLARITY**



**ALL-ENVIRONMENT  
DEFENSE**



**ALL-DAY  
FATIGUE RELIEF**

Fogging lenses. Eye strain. Glare. Switching between multiple pairs throughout the day. For Veterans and VA personnel, this daily friction slows clinical work, lab tasks, field operations, and errands after shift. This ANSI-certified system removes friction. One frame delivers all-day protection.

## BUILT FOR

VA hospitals • clinics • labs • field operations • logistics  
• mixed environments • veterans  
• VA personnel • caregivers

Work, home, and everywhere in between



## VALUE (WHAT IT DOES)

- Replaces multiple pairs with one daily-use system
- Maintains clear, fog-free vision from morning to night
- Reduces eye strain, glare, and visual fatigue
- Delivers consistent ANSI protection across all environments



## Complete Workforce Protection System

**Price: \$74.99**

**Compare At: \$103**  
**Lifetime Warranty on Defects**

### INCLUDED:

- Complete General Workforce ANSI System
- ZERO ADD-ONS. READY TO WORK.**
- 1 Pair ANSI Z87.1 Safety Glasses
- Full-Spectrum Protection Lens (UV + Blue Light + IR Defense)
- Anti-Fog + Hard-Coated Performance
- Lightweight TR-90 Frame (All-Day Comfort)
- Protective Case + Sleeve + Soft Bag + Lanyard



**ONE PAIR. PUT IT ON. FORGET ABOUT IT. ALL DAY.**

**GENERAL WORKFORCE ANSI COMPLIANCE SYSTEM**

# **FIT PROFILE GUIDE**

**543 SMALL FIT** → Narrow / smaller facial profiles / secure close fit

**669 STANDARD FIT** → Default for most users

**670 WIDE FIT** → Broader faces / wider cheekbone structure

**671 MAX COVERAGE FIT** → Larger facial profiles / maximum lens coverage

*If unsure, select 669 STANDARD FIT.*

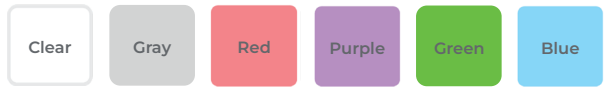
## **543 SMALL FIT**

**Part #: FL-GW-ANSI-543-CL-1P-C1**



## **669 STANDARD FIT**

**Part #: FL-GW-ANSI-669-CL-1P-C1**



## **670 WIDE FIT**

**Part #: FL-GW-ANSI-670-CL-1P-C1**



## **671 MAX COVERAGE FIT**

**Part #: FL-GW-ANSI-671-CL-1P-C1**



## **HOW TO ORDER**

### **STEP 1 — SELECT FIT**

543 / 669 / 670 / 671

### **STEP 2 — SELECT COLOR**

- C1 Clear
- C2 Gray
- C3 Red
- C4 Purple
- C5 Green
- C6 Blue

### **STEP 3 — BUILD PART NUMBER**

#### **FORMAT:**

FL-GW-ANSI-[FIT]-CL-1P-[COLOR]

#### **EXAMPLE:**

FL-GW-ANSI-669-CL-1P-C1

**One system. One SKU. One decision.  
Ready for immediate procurement.**

## **INCLUDED IN EVERY ORDER**

- ANSI Z87.1 Safety Frame (TR-90)
- UV400 + IR Protection Lens
- Anti-Fog Coating System
- Adjustable Lanyard
- Soft Protective Bag
- Hard Protective Case
- Branded Sleeve Box

**BON VIVANT®**

Service-Disabled Veteran-Owned (SDVOSB)



# POST-OP RECOVERY EYEWEAR

A continuous vision protection system designed for post-surgical recovery



**RECOVERY  
COMFORT**

*Continuous protection  
without switching*



Stable recovery vision



Sunlight protection on demand

**One lens system designed for continuous indoor-to-outdoor recovery protection**



**No Switching**



**Immediate Relief**



**Adaptive Light**



**All-Day Function**

Patients recovering from eye procedures often struggle with ongoing light sensitivity and inconsistent protection throughout the day. This system eliminates that friction by maintaining continuous indoor-to-outdoor visual coverage in a single frame, supporting more stable comfort during the full recovery process.

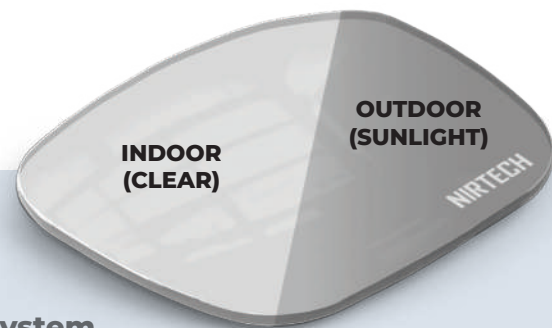
## BUILT FOR

Cataract recovery • LASIK / PRK recovery  
• Post-surgical eye protection • Light sensitivity management



## VALUE (WHAT IT DOES)

- Reduces light-related discomfort
- Maintains consistent indoor/outdoor protection
- Eliminates disposable eyewear cycling
- Supports stable recovery wear



## Complete Post-Op Vision Recovery System

**Price: \$139.99**

**Compare At: \$187**

**Lifetime Warranty on Defects**

### Included:

- Dual-Lens Recovery System
- Rx-Compatible Frames
- Protective Case + Lanyard
- Built for Continuous Use

Service-Disabled Veteran-Owned (SDVOSB)



**One system. No switching. Stable recovery from day to night.**

POST-OP VISION RECOVERY SYSTEM™

# LENS STYLE SELECTION

## PH1

### HIGH CONTRAST OUTDOOR PERFORMANCE

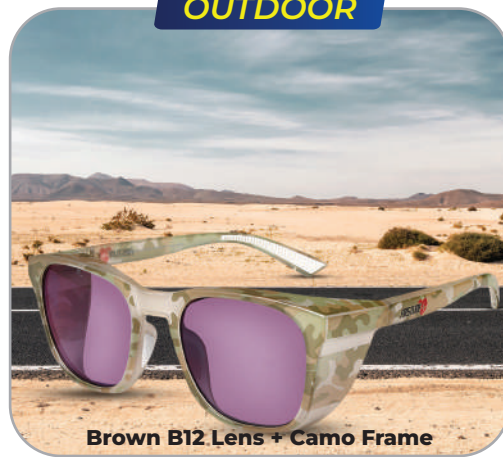
Recommended for glare-heavy environments and outdoor exposure

INDOOR



Clear Lens + Transparent Brown Frame

OUTDOOR



Brown B12 Lens + Camo Frame

INDOOR



Clear Lens + Transparent Frame

OUTDOOR



Gray S13 Lens + Dark Accent Finish

## PH3

### NEUTRAL CLINICAL ALL-DAY USE

Recommended for balanced indoor/outdoor recovery and clinical settings

## ORDERING OPTIONS

STYLE	FIT	PART NUMBER
PH1	Standard	FL-POVR-ANS-669-AD-PH1-1PK
PH3	Standard	FL-POVR-ANS-669-AD-PH3-1PK
PH1	Wide	FL-POVR-ANS-670-AD-PH1-1PK

## INCLUDED VALUE SYSTEM

- \$30+ Recovery Accessory Kit (lanyard, soft bag, hard case, sleeve box)
- \$100 Photochromic Lens Upgrade INCLUDED
- TR-90 Adaptive Frame System (light-responsive performance build)

ONE SYSTEM. ZERO ADD-ONS. READY TO USE.

### VALUE

Complete System: **\$139.99**

Compare At: **\$187**

### NOT SURE?

PH1 = OUTDOOR GLARE + HIGH CONTRAST  
PH3 = ALL-DAY NEUTRAL + CLINICAL BALANCE

### HOW TO ORDER

Step 1: Select Lens Style (PH1 or PH3)  
Step 2: Select Fit (Standard or Wide)

**Built for Veterans, VA personnel, and post-operative recovery environments requiring consistent protection, reduced light sensitivity, and seamless indoor/outdoor adaptation.**

**BON VIVANT®**  
Service-Disabled Veteran-Owned (SDVOSB)



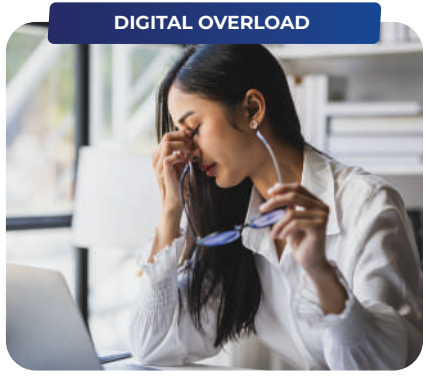
# DIGITAL EYE DEFENSE EYEWEAR

A continuous vision protection system designed for extended screen use and digital environments)



**SCREEN PROTECTION**

8-12+ hours of daily screen exposure



**DIGITAL OVERLOAD**



**ENVIRONMENTAL GLARE LOAD**

Both digital screens and environmental lighting place continuous, compounding strain on visual performance throughout the day.



**Less Fatigue**



**No Glare Disruption**



**Steady Focus**



**All-Day Sharpness**

Extended screen exposure has become a normal part of daily work and life, with most employees spending long hours on digital devices. This creates continuous visual strain that leads to eye fatigue, reduced focus, headaches, and discomfort. This system helps reduce that load and support clearer, more stable vision throughout the day.

## BUILT FOR

- Built for extended screen exposure (8-12+ hours daily)
- Clinical documentation & EHR systems
- Emote and hybrid work environments
- Monitoring, control rooms, and desk-based operations
- Study, training, and certification environments
- General daily digital device use



## VALUE (WHAT IT DOES)

- Reduces digital eye strain and screen-related fatigue
- Maintains consistent visual comfort across devices and shifts
- Eliminates reliance on disposable blue-light solutions
- Supports stable, all-day screen performance



## WHAT'S INCLUDED

- Wrap-Around Safety Frame with Side Shields
- Digital Eye Defense Lens System (Yellow Lens – screen & night use)
- Protective Hard Case
- Protective Sleeve Box
- Lanyard
- Engineered for extended screen and low-light environments



**Complete Digital Eye Defense Vision System**

**Price: \$79.99**

**Compare At: \$119**  
**Lifetime Warranty on Defects**

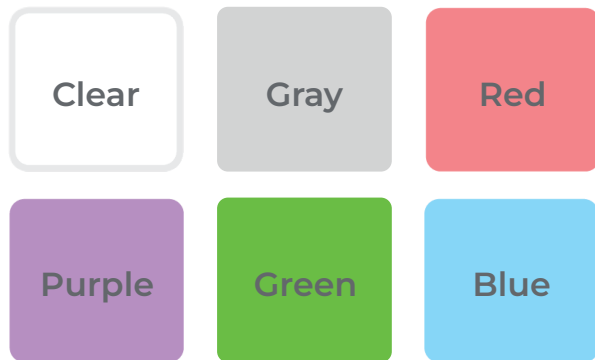
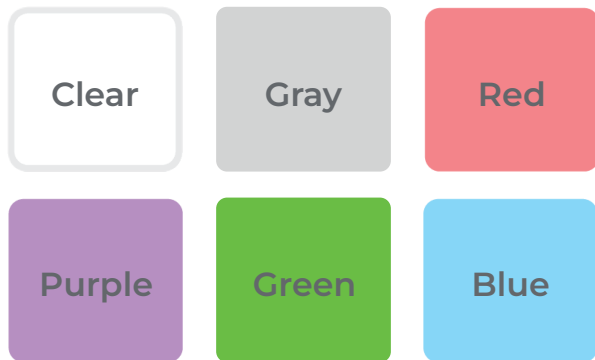


**One Pair. Two Functions: Safety + Screen Performance**

# FRAME OPTIONS

## 669 Standard Fit (Most Users)

## 670 Wide Fit (Extra Coverage)



### VALUE

**Complete System: \$79.99**

Compare At: **\$119**

### ORDER IN UNDER 30 SECONDS:

- **Fit:** 628669 (Standard) | 628670 (Wide)
- **Color:** C1 Clear | C2 Gray | C3 Red | C4 Purple | C5 Green | C6 Blue
- **Lens:** YL (Light Yellow Digital Eye Defense)
- **Format:** 1P (Single Pair)

**Example Part #: FL-DED-ANSI-669-YL-1P-C2**

### WHAT'S INCLUDED

- 1x Night Driving / Computer Lens (YL, Digital Eye Defense)
- 1x Protective Case
- 1x Cleaning Kit
- 1x Lanyard



### RESULTS YOU'LL NOTICE:

- Fewer headaches
- Less eye fatigue
- Clearer night vision
- Improved focus

*"As a U.S. Navy Trident Submarine Force Veteran, I built this system to solve eye fatigue from long hours, screens, and night driving."*

**— Anthony B. Miles, CEO**

**CONTROL YOUR VISION — OR LET FATIGUE CONTROL YOUR DAY.  
ONE SYSTEM. CLEAR VISION. ALL DAY**

**BON VIVANT®**  
Service-Disabled Veteran-Owned (SDVOSB)



# FIELD OUTDOOR EYEWEAR

A continuous performance vision system designed for field, driving, and outdoor operational environments



**FIELD PROTECTION**

*One pair all day—work, home, everywhere in between.*



Continuous glare and environmental strain reduce visual stability in field operations.



**GLARE CONTROL**



**LIGHT BALANCE**



**FULL STABILITY**



**VISUAL COMFORT**

Veterans and VA personnel experience glare, shifting light, and eye fatigue during field, driving, and operational work. This system eliminates eyewear switching and stabilizes vision across changing environments. It maintains consistent clarity throughout the day, reducing strain and supporting sustained focus, comfort, and performance in real-world operational conditions.

## BUILT FOR

- Field operations • Driving safety
- Outdoor work • VA personnel
- Veterans in active duty environments
- Glare and fatigue management



## VALUE (WHAT IT DOES)

- Reduces glare-related eye fatigue and strain
- Maintains consistent clarity across all environments
- Eliminates eyewear switching between field conditions
- Supports sustained visual performance during long shifts



## FIELD VISION SYSTEM

**Price: \$399.99**

**Compare At: \$544.60**  
**Lifetime Warranty on Defects**

## WHAT'S INCLUDED

- Complete Field Vision Performance System
- ZERO ADD-ONS. READY TO OPERATE.
- 2-Pair Adaptive Lens System (Field + Transition Coverage)
- TR-90 Impact-Resistant Frame System Built for Field & Outdoor Durability
- Protective Case + Sleeve Box + Soft Bag
- Service-Disabled Veteran-Owned (SDVOSB)



**ONE PAIR ALL DAY—WORK, HOME, EVERYWHERE IN BETWEEN**

## FIELD VISION SYSTEM

### CHOOSE YOUR MISSION PROFILE

Pick the environment you operate in most.  
(Choose one. The system does the rest.)

#### FIELD / OUTDOOR DOMINANT

##### HIGH GLARE PERFORMANCE

Sunlight, driving, patrol, inspections, outdoor operations

- ✓ Removes glare in high-brightness environments
- ✓ Improves outdoor clarity and terrain visibility
- ✓ Reduces eye fatigue during field work

**BEST FOR:**

Field personnel • Veterans • Driving • Outdoor duty

##### INCLUDED LENS SYSTEM

- Brown / Amber Gradient (Glare Reduction)
- Blue Gray Gradient (Outdoor Clarity)

**Part # BV-FOVP-219078-P-MIX-2P**



#### MIXED ENVIRONMENT OPERATIONS

##### TRANSITION STABILITY

Indoor ↔ outdoor movement, facility + field workflows

- ✓ Maintains stable vision across lighting changes
- ✓ Reduces fatigue from constant adjustment
- ✓ Keeps clarity consistent during shift work

**BEST FOR:**

Healthcare • VA staff • Facilities • Hybrid roles

##### INCLUDED LENS SYSTEM

- Gray Gradient (Neutral Balance)
- Polarized Gray Gradient (Light Control)

**Part # BV-FOVP-219080-P-MIX-2P**



#### MULTI-ENVIRONMENT FLEX PROFILE

##### FULL RANGE CONTROL

Unpredictable lighting, rotating roles, full operational coverage

- ✓ Adapts across all lighting environments
- ✓ Stabilizes vision in unpredictable conditions
- ✓ Supports all-day mixed-duty performance

**BEST FOR:**

Multi-role staff • Field + admin rotation • Full coverage use

##### INCLUDED LENS SYSTEM

INCLUDED LENS SYSTEM

- Brown / Amber Gradient (Outdoor Strength)
- Rose Gradient (Adaptive Comfort)

**PART # BV-FOVP-219083-P-MIX-2P**



**BUILT FOR THE FIELD. READY FOR DUTY.  
NO GUESSWORK—JUST CLARITY ACROSS EVERY ENVIRONMENT.**

**BON VIVANT®**

Service-Disabled Veteran-Owned (SDVOSB)



# DIABETIC WORKFORCE EYEWEAR

A Continuous Vision System That Maintains Stable, Clear Vision Throughout the Day—Even with Fluctuations, Light Sensitivity, and Glare.



**Built for 8-12+ Hour Days Without Visual Drop-Off.**



Diabetes-related vision instability can reduce visual consistency across clinical and workplace environments, affecting safety and performance.



Veterans, VA personnel, caregivers, and families often experience fluctuating vision caused by changing light, screen exposure, and daily fatigue. This system adapts to those conditions, stabilizing clarity and reducing strain so vision remains consistent across indoor, outdoor, and driving environments throughout the day.

## BUILT FOR

Diabetes-related vision fluctuation • Light sensitivity  
Screen-heavy work • Driving safety • Daily transitions  
VA personnel • Veterans • Caregivers • Family use  
Glare reduction • Fatigue management • Visual stability



## VALUE (WHAT IT DOES)

- Reduces glare-related eye strain and fatigue
- Maintains consistent clarity across changing environments
- Supports smooth transition from screens to sunlight
- Improves all-day visual comfort and stability



## Complete Diabetic Workforce Vision System

**Price: \$119.99**  
**Compare At: \$149.00**

**Lifetime Warranty On Defects**

### INCLUDED:

- Complete Vision Recovery System
- ZERO ADD-ONS. READY TO USE.
- Photochromic UV400 + IR Adaptive Lens System (Clear → Dark Light Response Technology)
- Metal + Sheet Stock Frame Construction**
- Built for structural durability and long-term daily workforce use
- Protective Case + Soft Bag + Sleeve Box
- Rx-Compatible Design



PRESCRIPTION  
READY

## SERVICE-DISABLED VETERAN-OWNED (SDVOSB)

Designed for Veterans and VA families requiring stable, adaptive vision support across daily life, work, and environmental changes.

# DIABETIC WORKFORCE PROTECTION VISION SYSTEM

## FRAME SELECTION — 1-MINUTE DECISION GUIDE

Choose your frame in under 10 seconds based on how you operate day-to-day.

### STEP 1 — PICK YOUR WORK STYLE

#### I WORK IN CONSTANT CHANGE (INDOOR → OUTDOOR → MOBILE)

CLASSIC MULTI-ENVIRONMENT SERIES



DV-JZJ-514139-TORT-CLR-PH1



DV-JZJ-514139-BLK-DEMI-PH1



DV-JZJ-514139-GRY-TORTBLK-PH1

- ✓ **Best for:** full shifts, active work, physical environments
- ✓ **Outcome:** stable fit + long-wear structural support

#### I WORK LONG HOURS AND NEED DURABILITY

**Choose:** WORKFORCE DURABILITY SERIES



DV-ESS-KS2203887-CLRBK-BRG-PH1



DV-ESS-KS2203887-CLRBK-RED-PH1



DV-ESS-KS2203887-BRT-GLD-PH1

- ✓ **Best for:** full shifts, active work, physical environments
- ✓ **Outcome:** stable fit + long-wear structural support

# DIABETIC WORKFORCE PROTECTION VISION SYSTEM

## STEP 1 — PICK YOUR WORK STYLE (CONT.)

### I WANT LIGHTWEIGHT EVERYDAY COMFORT

**Choose:** LIGHTWEIGHT PERFORMANCE SERIES



**DV-INK-G2098-LTGLD-BLK-PHI**



**DV-INK-G2098-GUN-BLK-PHI**

- ✓ **Best for:** daily wear, office, light field use
- ✓ **Outcome:** low-pressure comfort + smooth transitions

### I NEED SMALLER / COMPACT FIT

**Choose:** COMPACT PERFORMANCE SERIES



**DV-DUK-514137-TORT-CLR-PHI**



**DV-DUK-514137-CLR-DEMI-PHI**

- ✓ **Best for:** narrower face shape, lightweight comfort
- ✓ **Outcome:** secure fit without pressure points

## STEP 2 — CONFIRM YOUR NEED

### Ask yourself:

- Do I switch environments during the day?
- Do I wear glasses for long continuous hours?
- Do I experience light sensitivity or strain?

**If YES** → any of these systems is appropriate  
The difference is only fit + comfort profile

**ONE SYSTEM. ONE DECISION. FOUR FIT PROFILES.**

**BON VIVANT®**

Service-Disabled Veteran-Owned (SDVOSB)



# LAB / CLEANROOM LIGHT-ADAPTIVE ANSI COMPLIANCE EYEWEAR

A continuous ANSI-certified vision system designed for lab, cleanroom, and technical environments



**PRECISION / TECHNICAL  
PERFORMANCE**

*Continuous visual protection  
across all environments with-  
out eyewear switching*



**INDOORS**

**OUTDOORS**



Lab precision stability



UV/BL/IR adaptive transition

Engineered for precision indoors and adaptive protection outdoors—  
one lens system that keeps vision clear across every environment.



**Fog-Free  
Clarity**



**Light  
Stability**



**Compliance  
Adoption**



**Eye  
Endurance**

Lighting changes across labs, cleanrooms, and technical environments create visual strain as workers move between indoor, transitional, and outdoor conditions. This leads to fatigue, reduced accuracy, and slower performance. This ANSI-certified light-adaptive system maintains consistent clarity across shifting conditions, reducing strain and eliminating performance loss throughout the workday.

## BUILT FOR

VA hospitals, clinics, labs, and field operations.

Veterans, caregivers, and VA personnel needing consistent visual performance.

Used across duty hours and transitions between work, home, and operations.



## VALUE (WHAT IT DOES)

- Unifies multiple eyewear needs into one adaptive system.
- Maintains clarity across clinical, lab, and field environments.
- Reduces eye strain, glare, and fatigue while supporting
- Consistent performance and simpler compliance.



## Complete LAB / CLEANROOM LIGHT- ADAPTIVE SYSTEM

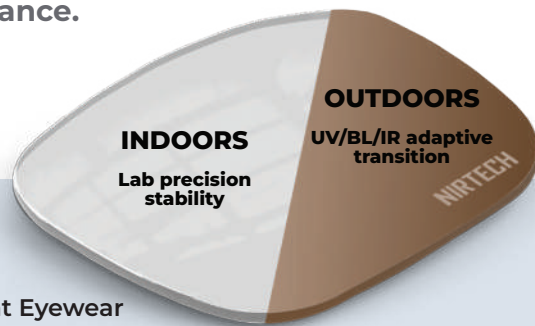
**Price: \$139.99**

**Compare At: \$187**

**Lifetime Warranty on Defects**

## INCLUDED:

- Light-Adaptive ANSI-Compliant Eyewear
- Fog-Resistant, Glare-Reducing Lenses
- Rx-Compatible Frames
- Built for Long Shifts
- Supports Compliance in Regulated Environments
- Reduces Visual Fatigue



PRESCRIPTION  
READY

Service-Disabled Veteran-Owned (SDVOSB)

**One system. No switching. Stable vision across every  
VA work environment.**

# LENS STYLE SELECTION

## PH1

Clear Lens + Brown B12 Performance Tint

Best for glare-heavy, high-detail environments requiring precision visibility

INDOOR



Clear Lens + Transparent Brown Frame

OUTDOOR



Brown B12 Lens + Camo Frame

INDOOR



Clear Lens + Transparent Frame

OUTDOOR



Gray S13 Lens + Dark Accent Finish

## PH3

Gray S13 Lens + Dark Accent Frame

Optimized for high-glare sunlight and outdoor operational exposure

## ORDERING OPTIONS

STYLE	FIT	PART NUMBER
PH1	Standard	FL-PLP-ANS628669-P1-BRNB12LP
PH3	Standard	FL-PLP-ANS628669-P3-GRYS13LIP
PH1	Wide	FL-PLP-ANS628670-P1-BRNB12LP

## INCLUDED VALUE SYSTEM

- \$30+ Professional Accessory Kit
- Photochromic Lens Upgrade INCLUDED (\$100 value)
- TR-90 Adaptive Frame System (light-responsive performance build)

ONE SYSTEM. NO ADD-ONS. READY FOR DEPLOYMENT.

## VALUE POSITIONING

Complete System: **\$139.99**

Compare At: **\$187**

## NOT SURE?

PH1 = High Contrast / Outdoor Glare / Precision Tasks  
 PH3 = Neutral Balance / All-Day Clinical + Mixed Environments

## HOW TO ORDER

Step 1: Select Lens Style (PH1 or PH3)  
 Step 2: Select Fit (Standard or Wide)

*Built for Veterans, VA personnel, and post-operative recovery environments requiring consistent protection, reduced light sensitivity, and seamless indoor/outdoor adaptation.*